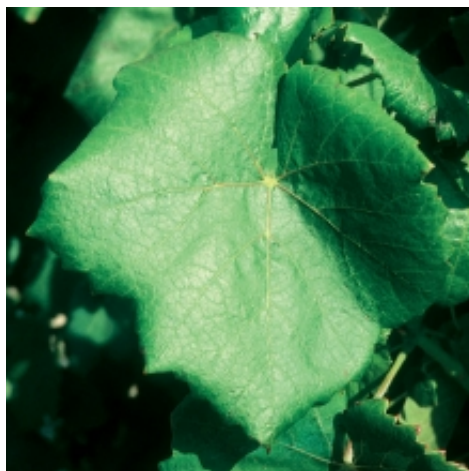




## Alicante henri bouschet N



### Name of vine variety in France

Alicante Henri Bouschet

### Origin

This variety was obtained by Louis and Henri Bouschet in 1855 at Mauguio (Hérault) by crossbreeding Grenache N with Petit Bouschet N (Aramon X Teinturier du Cher).

### Synonymy

In France, this variety may officially be called "Alicante Bouschet N" concerning plant propagating material. In the European Union, Alicante Henri Bouschet N can officially be designated by other names: Alikant bushe (Bulgaria), Garnacha tintorera (Spain) and Negral (Spain).

### Regulations

In France, Alicante Henri Bouschet N is officially listed in the "Catalogue of Vine Varieties". This variety is likewise listed in Catalogues in other European Union member states: Bulgaria, Cyprus, Spain, Greece, Italy and Portugal.

### Use

Wine grape variety

### Evolution of area under vines in France

	1958	1968	1979	1988	1998	2008	2011
ha	24168	20563	21996	15769	9393	7104	3837

### Description

Identification signs include:

- tips of its young shoots are densely covered with flat lying hairs with anthocyanin pigmentation on edges.
- young leaves are green with bronze patches,
- herbaceous shoots with Internodes with red striations,
- full adult leaves with medium vein anthocyanin pigmentation, revolute leaf blade, shiny, smooth with the anthocyanin pigmentation becoming intense in autumn and on the underside of the leaf, medium to densely covered with flat-lying hairs,
- rounded shaped berries with colored pulp,

- vine shoots are generally yellow color.

## Genetic profile

Microsatellite	VVS2	VVMD5	VVMD7	VVMD27	VRZAG62	VRZAG79	VVMD25	VVMD28	VVMD32
Allel 1	131	223	239	178	188	244	240	243	249
Allel 2	143	236	243	191	188	258	240	259	271

## Phenology

Bud burst: 4 days after Chasselas. Grape maturity: II period, 2 1/2 weeks to 3 weeks after Chasselas.

## Suitability for cultivation and agronomic production

This vine variety is quite vigorous but must be pruned short because it tends to become depleted. It is likewise sensitive to wind.

## Sensitivity to diseases and pests

Alicante Henri Bouschet N is not very sensitive to powdery mildew. On the other hand, it is highly prone to downy mildew, phomopsis and flavescence dorée and quite susceptible to bacterial necrosis. It is likewise susceptible to wood disease.

## Technological potential

The clusters are medium to large and the berries are medium size. This coloring vine variety is essentially used for its color input. Wines obtained are rather fleshy, oftentimes flat and lack finesse and elegance.




## Clonal selection in France

The four approved Alicante Henri Bouschet N clones carry the numbers 540, 803, 804 and 805.

## Bibliographic references

- Catalogue des variétés et clones de vigne cultivés en France. Collectif, 2007, Ed. IFV, Le Grau-du-Roi.
- Documentation interne du Domaine de Vassal. 1949-2011, INRA, Marseillan-plage.
- Cépages et vignobles de France, tome 2. P. Galet, 1990, Ed. Dehan, Montpellier.
- Traité général de viticulture, Ampélographie. P. Viala et V. Vermorel, 1901-1910, Ed. Masson, Paris.

## Description of clones approved in France

Clone number	Identity and availability		Agronomic data		Technical data	
	Origin	Selection	Fertility	Production level	Sugar content	Potential color
	Year approved	Agronomic references	Weight of grape bunches	Vigor	Total acidity	Tannic structure
	Growing surface area		Size of berries	Sensitivity to Botrytis	Aromatic intensity	Oenological aptitudes
540	Gard	ENTAV	low to medium	medium	medium	
	1978		medium		medium	
	0,05 ha		medium			distinctive wines of the vine variety
ENTAV 						
803	Hérault	ENTAV	medium	medium	medium	
	1985	Languedoc, domaine de l'Espiguette	medium		medium	
	3,30 ha		medium			distinctive wines of the vine variety
ENTAV 						
804	Hérault	ENTAV	medium to high	medium to high	medium	
	1985	Languedoc, domaine de l'Espiguette	medium		medium	
	0,60 ha		medium			distinctive wines of the vine variety
ENTAV 						
805	Hérault	ENTAV	medium	medium	medium	

Clone number	Identity and availability		Agronomic data		Technical data	
	<i>Origin</i>	<i>Selection</i>	<i>Fertility</i>	<i>Production level</i>	<i>Sugar content</i>	<i>Potential color</i>
	<i>Year approved</i>	<i>Agronomic references</i>	<i>Weight of grape bunches</i>	<i>Vigor</i>	<i>Total acidity</i>	<i>Tannic structure</i>
	<i>Growing surface area</i>		<i>Size of berries</i>	<i>Sensitivity to Botrytis</i>	<i>Aromatic intensity</i>	<i>Oenological aptitudes</i>
1985	Languedoc, domaine de l'Espiguette	medium		medium		
0,87 ha		medium				distinctive wines of the vine variety

ENTAV  INRA®



Cette œuvre est mise à disposition selon les termes de la [Licence Creative Commons Attribution - Pas d'Utilisation Commerciale - Partage dans les Mêmes Conditions 4.0 International](https://creativecommons.org/licenses/by-nc-sa/4.0/)

